

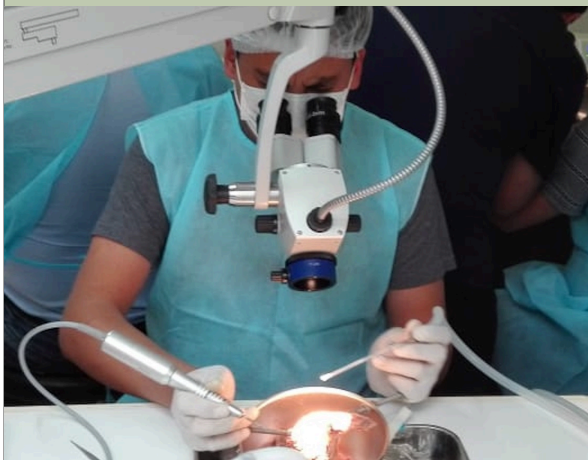
Course Objectives

This course is designed for international residents and Otolaryngologists, although it is open to anyone with an interest in Otology.

The objectives of this course are to give a broad based exposure to general topics in Otology, so that upon completion of the course, one will have a greater comfort level with the understanding of ear disease and its management.

The laboratory sessions are designed to teach middle ear anatomy and correlate this with basic surgical approaches to ear diseases.

Didactic sessions held on the Pacific Neuroscience Institute Campus are designed to review the basics of chronic ear disease, OCR, acoustic tumors, the role of the endoscope in ear surgery, the reading of the CT scan, and how to deal with idiopathic and iatrogenic complications.



Course Faculty

COURSE CO DIRECTORS

Courtney Voelker, MD.

Division Director Otology and Neurotology
Pacific Neuroscience Institute
Los Angeles, CA

Chester Griffiths, MD.

Division Director of Eye, Ear, and Skull Base
Pacific Neuroscience Institute
Los Angeles, CA

Garni Barkhoudarian, MD.

Neurosurgery; Co-Director Pituitary Disorders
Center; Director, Adult Hydrocephalus Center;
Director, Facial Pain Center; Chief, Radiosurgery
Program; Director, SJCI / PNI Neuroanatomy
Laboratory

DISTINGUISHED GUEST FACULTY

Richard Wagner, MD, FACS

Clinical Otologist
Director of Global ENT Outreach

PACIFIC NEUROSCIENCE

INTERNATIONAL TEMPORAL BONE
COURSE

April 5-7, 2024

Los Angeles, California USA



Course description

INTENDED AUDIENCE

This course is intended for Otolaryngologists and residents/fellows in training with an interest in the fundamentals of successful otologic surgery via the study of the temporal bone anatomy, disease management, and applied surgical techniques.

COURSE OVERVIEW

After participating in this CME activity, participants should be able to describe and discuss:

- basic and applied anatomy of the temporal bone
- understand the basic use of the endoscope in otologic surgery
- approach to surgical management of ear disease
- evidence based approaches to otologic evaluation and diagnosis



Topics to Be Presented

- Temporal bone anatomy
- Surgery of chronic ear
- Cochlear implants
- Radiology of the temporal bone
- Iatrogenic and Idiopathic complications
- Ossicular reconstruction
- Stapedectomy
- Management of acoustic tumors
- Surgery for vertigo
- Endoscopic ear surgery

Procedures demonstrated

- Canal wall up mastoidectomy
- Canal wall down mastoidectomy
- Facial recess and extended facial recess
- Endolymphatic sac decompression
- Facial nerve identification
- Middle cranial fossa approach
- Cochlear implantation
- Endoscopic ear surgery



Course Location

PNI Temporal Bone Lab
2300 Santa Monica Blvd.
Santa Monica, CA

Course Inscription fee

Lecturers only	200.00
Residents/Fellows	300.00
Physicians in practice	500.00

Contact Information

info@geoutreach.org